



**EUREKA**  
**PARK**  
SECTOR 150 NOIDA

#Home **Smart**Home

## NOIDA - A SMART CITY IN THE MAKING

Noida has always been a preferred residential location when it comes to buying a home. The city has everything that makes it a perfect choice. Its smart infrastructure, excellent connectivity, an extensive rail network, world-class education, shopping malls and medical facilities make for a smart and contemporary lifestyle.

With a decade of tremendous growth and several smart infrastructural additions, Noida is swiftly progressing towards becoming a smart city, and the most promising real estate destination.

## NOIDA SECTOR 150 THE UPCOMING SPORTS CITY

Experience living at a place, where you can step out anytime, to step into a world-class sports city that hosts amenities of global standards, flung open to all the residents. As per the Master Plan of Noida, Sector 150 is being developed as a sports city with rejuvenating sports amenities like volleyball, hockey, football, basketball along with 2 golf courses, to promote a happy & healthy living.

## THE GROWTH INDICATORS

Announcement of schedule for the first flight to take off from the Jewar International Airport.<sup>1</sup> ₹467-cr elevated road corridor project<sup>2</sup> 50 acres<sup>3</sup> IT Park by Tata Consultancy Services at Sector 157, Noida<sup>3</sup>. Announcement of the Regional Rapid Transit System in the NCR.<sup>4</sup>

1. *Financial Express* | Date of publication: 21 Dec 2020

2. *NBM&CW* | Date of publication: 03 July 2020

3. *Business Standard* | Date of publication: 24 Dec 2018

4. *Economic Times* | Date of publication: 29 Dec 2020





# GET FAR FROM A MUNDANE LIFE WITHOUT GETTING FAR FROM MODERNITY

**05 MIN**

**SPORTS FACILITIES\***  
 • Cricket Ground  
 • 9-Hole Golf Course

**15 MIN**

**CONNECTIVITY**  
 • Sector 148 Metro Station

**FOOD & ENTERTAINMENT**  
 • Inox Cinemas

**EDUCATIONAL HUB**  
 • BIMTECH  
 • Shiv Nadar School  
 • GD Goenka Public School

**20 MIN**

**MEDICAL FACILITIES**  
 • Ivory Hospital  
 • Jaypee Hospital

**FOOD & ENTERTAINMENT**  
 • Stellar Children's Museum  
 • The Grand Venice Mall  
 • Upcoming Film City

**EDUCATIONAL HUB**  
 • Amity University  
 • Gautam Buddha University  
 • Step By Step School  
 • Sharda University

**30 MIN**

**MEDICAL FACILITIES**  
 • Kailash Hospital & Heart Institute

**FOOD & ENTERTAINMENT**  
 • The Great India Place Mall  
 • DLF Mall of India  
 • Buddh International Circuit  
 • Worlds of Wonder  
 • Gardens Galleria

**EDUCATIONAL HUB**  
 • Pathways School  
 • Lotus Valley School  
 • Delhi Public School  
 • Bennett University (Times of India Group)

**45 MIN**

**MEDICAL FACILITIES**  
 • Fortis Hospital  
 • Apollo Hospital

**CONNECTIVITY**  
 • Jewar International Airport (Proposed)

## IN THE NEWS

• Microsoft to set up new 4,000-employee campus in Noida; second-largest in India – Moneycontrol (01/07/2020) • U.P. announces to set up country's 'biggest' film city in Noida – Indian Express (20/09/2020)  
 • Noida authority allots 4 new plots to boost industrial growth – Hindustan Times (23/06/2020) • RITES to provide technical consultancy for Noida heliport in Sector 151-A – Mint (13/08/2020) • Samsung to infuse ₹5,000 crore to expand Noida manufacturing plant – Business Standard (23/11/2020) • Noida's Jewar International Airport will open floodgates of development in western Uttar Pradesh – DNA (03/09/2021) • ₹3,090 crore infra projects to be ready before Dec 2021 in Noida – Mint (02/09/2020).

\*Cricket Ground and 9-Hole Golf course as per the Master Plan of Sector 150 approved by Noida authority and part of common sports facility of the sports city, to be developed and managed by third party. Distance and time mentioned to travel are approximate and have been calculated on Google Maps and may vary depending upon traffic, weather conditions and infrastructure facilities provided by concerned authorities.



FUTURE DEVELOPMENT

Artistic impression of future development.

### GOLD RATED BY IGBC

Eureka Park is pre-certified as Gold Rated by IGBC (Indian Green Building Council) for giving equal prominence to eco-sustainability, wellness, water and energy conservation through eco-sensible lifestyle features integrated within the project.

### CODED GREEN BY UP-RERA

Eureka Park has been coded green (safe and credible) by UP-RERA. The Uttar Pradesh Real Estate Regulatory Authority colour codes different real estate projects to mark developer's reliability; wherein a green coding means safe for investing.

Source: <https://realty.economictimes.indiatimes.com/news/industry/up-rera-colour-codes-to-mark-developer-reliability/78639534>

## CONTEMPORARY LIFESTYLES BACKED BY DECADES OF TRUST

Welcome to Eureka Park, where a delightful experience unfurls with every step. Where modern day aspirations meet a luxurious indulgence, backed by the unshakeable trust of Tata. An epitome of modernity, an abode of lavishness and a home to smartness, Eureka Park is so much more than just a home.

## CLUBHOUSE AMENITIES

# WHERE INDULGENCE MEETS PERFECTION

Every home at Eureka Park is meticulously planned to ensure space optimization, abundant sunlight and uninterrupted flow of air. So you rise up to shine every day.



TABLE TENNIS



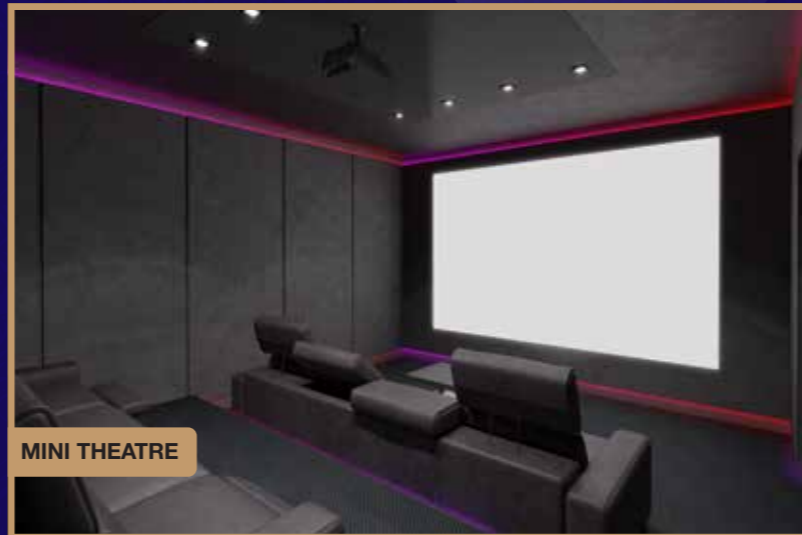
SQUASH COURT



GYMNASIUM



LIBRARY/CONNECTED LOUNGE



MINI THEATRE



YOGA ROOM

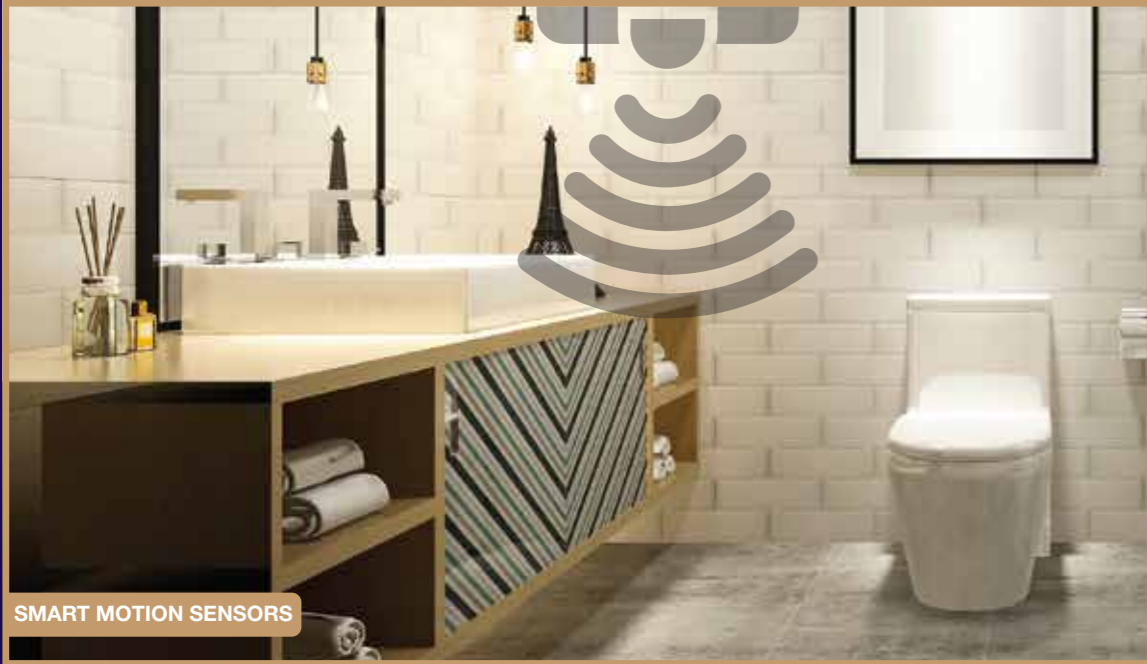
## HOME AUTOMATION



SMART SPACES



CCTV SURVEILLANCE



SMART MOTION SENSORS

• Home automation features - Gas leakage detectors • Video door phones • Secured parking space with access through RFID tag • Digital door locks with keyless entry\*

## EXTERNAL AMENITIES



BADMINTON COURT



SMART PARKING



INTERNATIONAL SIZED TENNIS COURTS<sup>^</sup>



KIDS' PLAY AREA

Artistic impression of future development.

• Jogging track • Open green space • Senior citizens' area • Wi-fi enabled gazebos

## LEGEND

01. SKATING TRACK
02. PALM COURT
03. COMMUNITY BUILDING & SPORTS BLOCK
04. SWIMMING POOL
05. KIDS' POOL
06. MULTIPURPOSE PARTY LAWN
07. GAZEBOs
08. CONVENIENT SHOPPING AREA
09. LANDSCAPED PLAZA SPACE
10. WALKING TRACK
11. OPEN SPACE FOR CULTURAL ACTIVITIES
12. AMPHITHEATRE
13. YOGA SQUARE
14. EXERCISE GARDEN
15. MULTIPURPOSE OPEN LAWN
16. KIDS' PLAY AREA
17. OPEN SEATING AREA
18. INTERNATIONAL SIZED TENNIS COURTS#
19. BADMINTON COURTS
20. BASKETBALL COURT
21. PUTTING PRACTICE GREENS

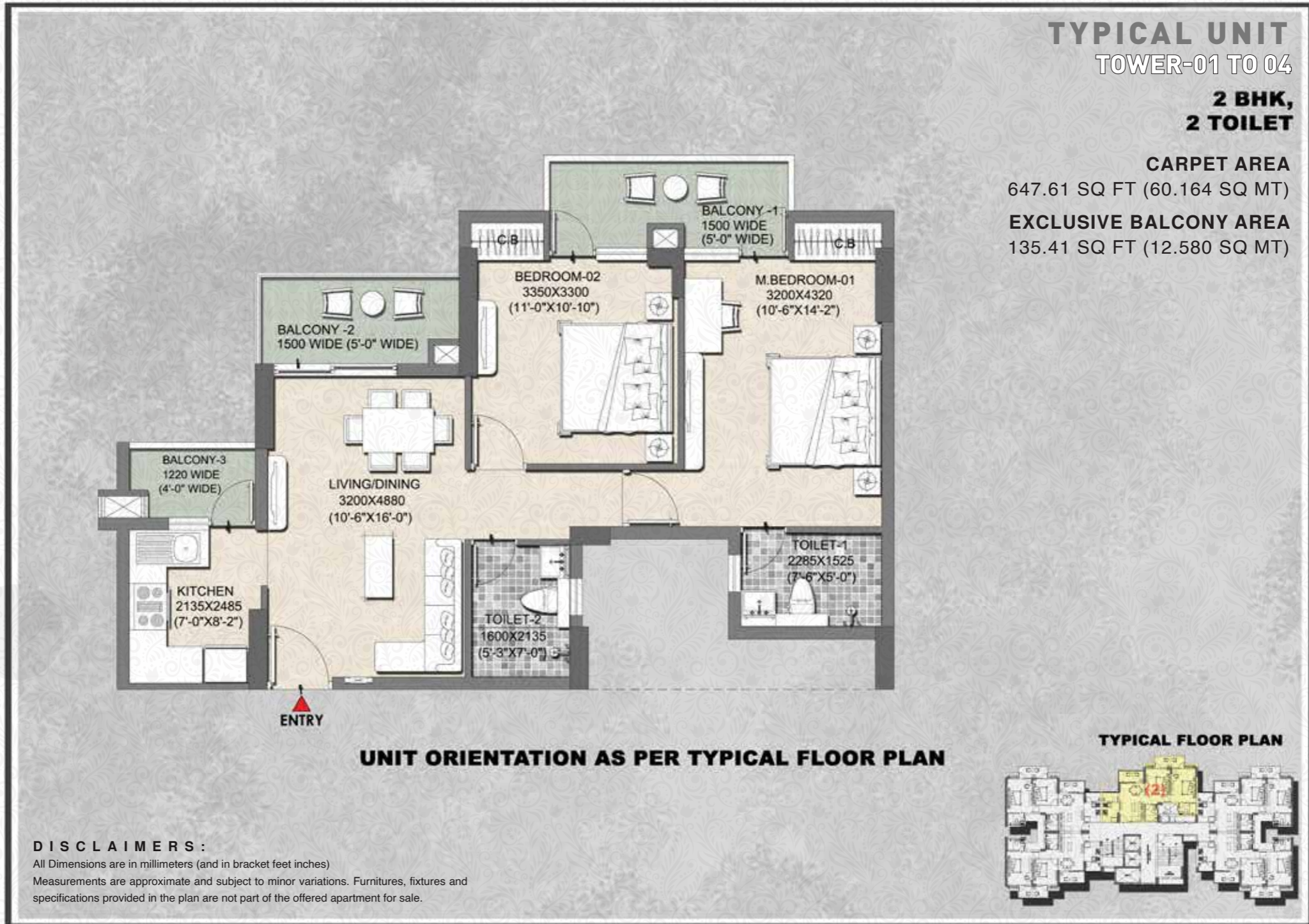


TOTAL LAND AREA: 20.74 ACRES

# Unit Plans

## INTELLO 1100

Actual image shot at site on 15th November 2019.





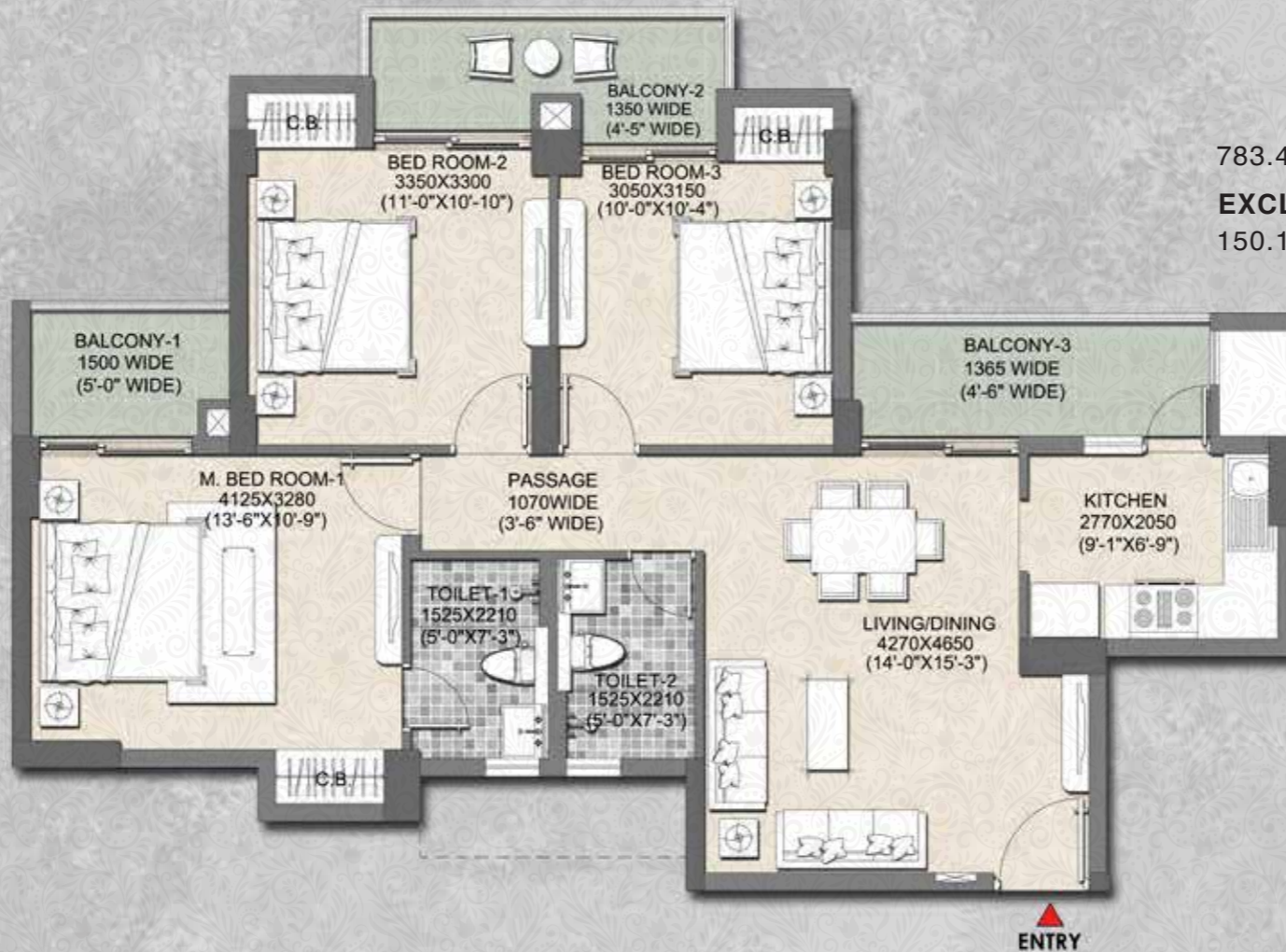
# Unit Plans

## BRIGHTUS 1285

### TYPICAL UNIT TOWER-08 TO 12 & 14

**3 BHK,  
2 TOILET**

**CARPET AREA**  
783.41 SQ FT (72.781 SQ MT)  
**EXCLUSIVE BALCONY AREA**  
150.13 SQ FT (13.947 SQ MT)

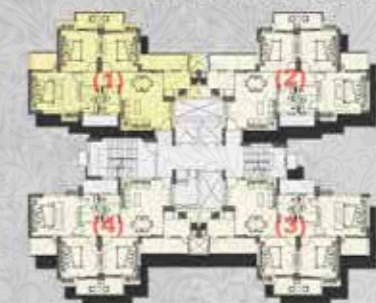


**UNIT ORIENTATION AS PER TYPICAL FLOOR PLAN**

**DISCLAIMERS :**

All Dimensions are in millimeters (and in bracket feet inches)  
Measurements are approximate and subject to minor variations. Furnitures, fixtures and specifications provided in the plan are not part of the offered apartment for sale.

**TYPICAL FLOOR PLAN**



# Unit Plans

**PRIMUS**  
**1575**

**TYPICAL UNIT**  
TOWER 15 TO 21

**3 BHK,**  
**3 TOILET**  
**SERV. TOILET**

**CARPET AREA**  
981.34 SQ FT (91.169 SQ MT)  
**EXCLUSIVE BALCONY AREA**  
169.38 SQ FT (15.736 SQ MT)



**UNIT ORIENTATION AS PER TYPICAL FLOOR PLAN**

**DISCLAIMERS :**

All Dimensions are in millimeters (and in bracket feet inches)  
Measurements are approximate and subject to minor variations. Furnitures, fixtures and specifications provided in the plan are not part of the offered apartment for sale.



# PROJECTS

## LANDMARK PROJECTS IN NORTH INDIA

Residential



SECTOR 72, GURUGRAM

**PRIMANTI**  
VILLAS AND RESIDENCES

Actual image shot on 20<sup>th</sup> March 2021



NEAR KASAULI

**MYST**  
ECO-LUXURY RESIDENCES

Actual image shot on 5<sup>th</sup> December 2017



UNDER CONSTRUCTION

SECTOR 113, GURUGRAM

*La VIDA*  
LIFESTYLE RESIDENCES

Artistic impression of future development.



DELIVERED

SECTOR 59, GURUGRAM

**RAISINA**  
RESIDENCY  
Where art inspires life

Actual image shot on 25<sup>th</sup> August 2018



SECTOR 112, GURUGRAM

**GURGAON GATEWAY**  
GRAND RESIDENCES

Actual image shot on 4<sup>th</sup> December 2017



SECTOR 37, BAHADURGARH

**NEW HAVEN**  
BAHADURGARH

Actual image shot on 5<sup>th</sup> April, 2021

Commercial



UNDER CONSTRUCTION

SECTOR 59, GURUGRAM

**Intellion**  
PARK

Actual image shot on 25<sup>th</sup> August 2018



SECTOR 72, GURUGRAM

**Intellion**  
EDGE

Image for representation purposes only.



DELIVERED

SECTOR 29, GURUGRAM

**TRILIUM AVENUE**

Image for representation purposes only.

**Sales Gallery:** Eureka Park, SC 02/A-1, Sector 150, Noida, Gautam Buddha Nagar, 201310.

**UPRERA Regn. No. EUREKA PARK PHASE I - UPRERAPRJ5448 & PHASE II - UPRERAPRJ469983 available on [www.up-rera.in](http://www.up-rera.in)**

Disclaimer : The project is developed and promoted in phases by Land Kart Builders Pvt. Ltd. ("Developer") - subsidiary of Tata Value Homes Limited. Sub Lease of the unit is subject to terms of the Application Form and Agreement to Sub lease. Please refer to the latest brochure prior to investing in the property. The approvals can be checked at site office and in the office of the Developer. Developer reserves the right to make changes as per prevailing Government norms. Project is financed by Aditya Birla Finance Limited. For conversion 1 Acre is equal to 4046.86 square metre and 1minute is equal to 60 seconds. 'TATA' and 'TATA VALUE HOMES' are the registered trademarks of Tata Sons Private Limited. For more information, please contact our site office at Sector 150, Noida, 201310. Visit: <https://www.tatarealty.in/project/eureka-park/>



**SCAN THE QR CODE FOR  
A VIRTUAL TOUR  
OF THE SHOW APARTMENT**